

Farm Retirement AUCTION

TIMED ONLINE

13533 Co Hwy 7, Doran, MN 56522. From Foxhome, MN, 7 miles south on Hwy 19, 3 miles east on Hwy 8, 1-1/2 miles south on Hwy 7 or from Doran, MN, 11 miles east on Hwy 8, 1-1/2 miles south on Hwy 7.

PREVIEW: Friday, August 27 – Friday, September 10 by appointment. Contact Brad, 218.770.0598.

LOADOUT: All items to be removed within two weeks of auction closing by appointment on Monday-Friday from 8AM-5PM.

Opens Friday, September 10
CLOSES: MONDAY, SEPTEMBER 20 | 12PM

TRACK TRACTORS

2008 Case-IH 485, Quadtrac, luxury cab, leather, powershift, 5 hyd., front/rear diff lock, integrated auto steer, Pro 600 display, 262 receiver, front tow cable, Clear View caps, New 30" tracks, 2,016 hrs., corner post replaced by Titan Machinery at 1,792 hrs., 3,808 total hrs., S/NZ7F108909

2008 Case-IH 485, Quadtrac, luxury cab, leather, powershift, 4 hyd., return flow, 1000 PTO, front/rear diff lock, integrated auto steer, FM-750 display, AG25 receiver, Clear View caps, 30" tracks, S/NZ8F110165

MFWD & 2WD TRACTORS

2007 John Deere 7930, MFWD, IVT, deluxe cab, active seat, buddy seat, cloth, 4 hyd., 45 gpm hyd. pump, power beyond, return flow, LH reverser, 3 pt., quick hitch, (3) PTO's, diff lock, integrated auto steer, HID lights, electric mirrors, (20) front suitcase weights, front fenders, 380/85R34 front duals, 380/90R50 rear duals, set for 22" rows, 5,010 hrs., S/NRW7930D004221, single owner

2004 John Deere 7920, MFWD, IVT, deluxe cab, buddy seat, cloth, 4 hyd., LH reverser, 3 pt., quick hitch, (3) PTO's, diff lock, integrated auto steer, HID lights, (10) front suitcase weights, rear wheel weights, 380/85R34 front duals, 380/90R50 rear duals, 4,939 hrs., S/NRW7920D017934

Allis Chalmers 7000, 2WD, CAH, 12 spd. partial powershift, 3 hyd., 3 pt., 540 PTO, swing drawbar, adj. front axle, 11,000-16 front tires, 13.6-46 rear tires, 9,753 hrs.

SPRAYERS

2013 John Deere 4730 self-propelled sprayer, deluxe cab, 90' boom, 20" spacing, 800 gal. poly tank, 5-way nozzle bodies, 7-section shut-off, std. pump, integrated auto steer, ride & traction control, BoomTrac, hyd. tread adj., return to ground height, fence row nozzles, 380/90R46 front & rear duals, 781 engine hrs., 345 spray hrs., S/N1N04730XTD0023958, single owner

Brittony band sprayer, 36x22", 3 pt., 5-section fold, 750 gal. poly tank, hyd. pump, 3-section control, rear caster wheels, setup for broadcast, band spray carts included

WHEEL LOADER & ATTACHMENT

Allis Chalmers 840 Series B wheel loader, cab w/heater, 3 spd., 89" bucket, 16.9-24 tires, 90% tread, shows 4,485 hrs., seller reserves the use of loader for 2 weeks after sale for loading only, S/N840B-3504

Snow bucket, 94", pin mounts, for payloader

OLDER TRACTORS & LOADER

1953 Farmall Super M, narrow front, gas, 1 hyd., 540 PTO, rear wheel weights, 13.6-38 rear tires, S/NF35849

1958 Farmall 450, wide front, diesel, gas start, 1 hyd., TA, fast hitch, 15.5-38 rear tires, 4,048 hrs., S/N18421

John Deere 158 hyd. loader, 7' bucket, mounts for 30/40 Series tractor, S/NE0158019793W

GPS EQUIPMENT

(2) John Deere SF3000 receivers, SF1, SF2 ready, S/NPCGT3TA359119, S/NPCGT3TA556914

(2) John Deere 2630 displays, SF2, (1) 1,209 hrs., S/NPCGU2UC410384, (1) 120 hrs., S/N PCGU2UA334330

John Deere 2600 display, SF2, 3,441 hrs., S/NPCGU26H166953

COMBINE

2011 Case-IH 8120, PRWD, CVT drive, deluxe cab, buddy seat, Field Tracker, integrated auto steer, Pro 600 display, Y&M, ext. unload auger, hopper ext., fine cut chopper w/spreader, rock trap, electric mirrors, Clear View caps, rear trailer hitch, 36" tracks, 28L-26 rear tires, 1,834 sep. hrs., 2,585 engine hrs., S/NYBG213391

HEADS, HEAD TRAILER & SWATHER

2011 Capello Quasar chopping corn head, 12x22", Insight header height, contour shafts, hyd. deck plates, poly snouts, (4) row stalk stompers, single pt. hookup, S/N8224

2011 Case-IH 2162 flex draper head, 35' hyd. fore/aft, finger reel, AHH, single sickle drive, 3" cut, hyd. tilt, mounts for Case-IH Flagship combines, S/NYBZN15232

Case-IH 1015 pickup head, 7-belt pickup, wind screen, S/NX000514X

Parker CHC360 header trailer, 40', 4-wheel, long pole, lights, adj. brackets, 22.5x8.0-12 tires

Kory 6672 4-wheel header trailer, 25', custom-built for corn head, 9.5L-15 tires on 8-bolt hubs

Shop-built 2-wheel header trailer, 20'

1995 MacDon 3000 pull-type swather, 25', bat reel, auto fold, 1000 PTO, S/N100397

GRAIN CART

Unverferth 6500 grain cart, 650 bu., 13" side auger, 1000 PTO, lights, 650/75R32 tires, 95% tread, S/NB16830153

DRILL

2012 John Deere 455 drill, 35', 6" spacing, 3-section, front fold, ground drive, single compartment, discs approx. 13-1/2", (6) seed sensors, rear camera, rubber press wheels, 11L-15 main frame tires, 7.60-15 wing tires, S/N1N00455XPB0745117

PLANTER & TRANSPORT

2012 John Deere DB44, CCS planter, 24x22", vari-rate hyd. drive, pneumatic down pressure, John Deere row units, Digi-Star GT400 scale, SharkTooth crank adj. row cleaners, on board air compressor, hyd. markers, corn & soybean plates, 31x13.5-15 wing wheels, 17" Camoplast tracks, 17,233 acres, single owner, S/N1A0DB44XVCG745124

2012 John Deere factory transport, walking tandems, 31x13.5-15 tires, New, off 2012 John Deere DB44 planter, stored inside

SEED TENDER

Seed Shuttle SS290 tandem axle seed tender, 2 compartment, torsion susp., 180 degree swing conveyor, Honda

GX160 electric start gas motor, electric brakes, 2-5/16" ball, 235/80R16 tires on 8-bolt hubs, S/N213NS049

TILLAGE EQUIPMENT

2020 Norwood Kwik-Till HSD3500 disc, 35', 8" spacing, 3-section, front fold, approx. 19-3/4" notched front blades, approx. 19-3/4" curved 2nd row, individual cushion gang, rolling basket, hyd. jack, 710/45R22.5 flotation main frame tires, 600/50R22.5 wing tires, S/N55716

2015 Summers DC2830 disc chisel, 36', 12" space, full floating hitch w/HD carrier wheels, walking tandems across, individual rock flex discs w/adj. angle & hyd. lift, HD spring trip, factory rear hitch, Summers 4-bar harrow, 12.5L-16 front caster wheels, 11L-15 main frame tires, S/NP0027

2012 Summers disc chisel, 36', 12" space, full floating hitch w/HD carrier wheels, walking tandems across, individual rock flex discs w/adj. angle & hyd. lift, HD spring trip, factory rear hitch, Summers 4-bar harrow, 12.5L-16 front caster wheels, 11L-15 main frame tires, S/NL2606

2014 Case-IH Tiger-Mate 200 field cultivator, 50', 6" spacing, 5-section fold, knock-on shovels, single pt. depth, walking tandems across, (4) wing gauge wheels, rear hitch w/hyd. hookups, light pkg., 4-bar harrow, 12.5-16.5L main frame tires, S/NYED072694

2005 Case-IH Tiger-Mate II field cultivator, 54-1/2', 6" spacing, 5-section fold, knock-on shovels, single pt. depth, walking tandems across, (4) wing gauge wheels, rear hitch & hyd., 4-bar harrow, 12.5L-15 main frame tires, S/NJFH0027095

Massey Ferguson 266 field cultivator, 48', 7" spacing, 5-section fold, 2nd set of wings removed, setup as 40' w/half of the shanks removed but included, walking tandems across, 3-bar harrow

John Deere 1100 cultivator, 22', 5" spacing, 3 pt., 3-section fold, 3-bar harrow

Flexi-Coil 75 coil packer, 50', 5-section fold, tandems on main, wing gauge wheels, 9.5L-15 tires, S/NK037329

John Deere 3600 pull-type plow, 8x18", auto reset, vari-width, full set of coulters, on land hitch, S/NA03600X014054

John Deere 3200 plow, 6x18", auto reset, adj. hitch, S/N101935A

Bush Hog 245 offset disc, 16', 11" spacing, 23" blades, scrapers, adj. hitch, tandem carrier wheels

ROW CROP EQUIPMENT

Alloway 3030 row crop cultivator, 12x22", 3 pt., single shank, cutaway discs, rolling shields, S/N23178

Alloway 3030 row crop cultivator, 12x22", 3 pt., single shank, rolling shields, S/N18276

SEMI TRACTORS & CABOVER

2007 IHC 9400i tandem axle day cab, ISX Cummins, 435 hp., Eaton 10 spd., engine brake, air susp., air slide 5th, air shift PTO, cruise, diff lock, 2-line wet kit, aluminum reservoir, dual aluminum fuel tanks, half poly fenders, 164" WB, 295/75R22.5 tires on aluminum front/steel rear rims, 548,637 miles

2004 IHC 9400i tandem axle day cab, N14 Cummins, Eaton 9 spd., engine brake, air susp., air slide 5th, air shift PTO, cruise, diff lock, 2-line wet kit, aluminum reservoir, dual aluminum fuel tanks, half poly fenders, 184" WB, 11R22.5 tires on aluminum front/steel rear rims, 119,379 miles

1993 Kenworth T600 tandem axle day cab, 12.7L 60 Series Detroit, Eaton 13 spd., engine brake, air susp., air slide 5th, air shift PTO, cruise, diff lock, 2-line wet kit, aluminum reservoir, dual aluminum fuel tanks, half poly fenders, mud scrapers, Saf-T-Pull, 178" WB, 11R22.5 tires on full aluminum rims, 235,427 miles

1988 Freightliner tandem axle cabover, Cat, Eaton 9 spd., spring susp., air slide 5th wheel, diff lock, 2-line wet kit, aluminum reservoir, single aluminum fuel tank, poly 1/2 fenders, 158" WB, 11R22.5 tires on steel rims, 737,889 miles

BOX TRUCK & SERVICE VEHICLE

1988 Kenworth T600 tri-axle, NTC 315 Cummins, Eaton 9 spd., air susp., Dakota 21'x96"x60" steel box, hoist, roll tarp, diff lock, plumbed for drill fill, mud scrapers, Saf-T-Pull, air up/down pusher axle, 11R22.5 tires on steel rims, 613,303 miles

2012 Chevrolet 2500HD, reg. cab, work pkg., 6.0L V8 gas, automatic, 4WD, Knapheide 8'x7' steel flatbed, cab guard w/lights, tow pkg., 5th wheel ball hitch, 265/70R17 tires on steel rims, 49,922 miles

TRAILERS

2002 PJ Mfg. tandem axle gooseneck trailer, 25'x102", spring susp., 20' main deck, 5' beavertail, wood deck, flip over ramps, dual jacks, front chain storage box, 7,000 lb. axles, 235/85R16 tires on 8-bolt hubs

2009 Loadline tandem axle steel end dump, 34'x62", spring susp., 2-line hyd., poly liner, combo end gate, rear controls, mud scrapers, 11R22.5 tires on steel rims

2006 Vantage T90-SS tandem axle end dump, 39'x62", air susp., 2-line hyd., aluminum frame, poly liner, electric roll tarp, combo end gate, 285/75R24.5 tires on (4) aluminum rims

1985 East tri-axle aluminum end dump, 32'x62", 30' aluminum tub, poly liner, air susp., roll tarp, combo end gate, air up/down pusher axle, 11R24.5 tires on full aluminum rims

1978 CMC tandem axle aluminum end dump, frameless, 35'x60", spring susp., 2-line hyd., roll tarp, combo end gate, 11R22.5 tires on steel rims

Shop-built tandem axle trailer, 24'x8", spring susp., wood deck, tandem duals, 7-14.5 tires, No Title, non-roadable

GRAIN HANDLING & AERATION EQUIPMENT

2013 Walinga 6614 grain vac, 6", 1000 PTO, hyd. lift spout, cleanup kit, asst. flex tubes & hoses, 205/75D15 tires, S/NMT66141302D13211

1997 Westfield MK100-71 swing hopper auger, 71'x10", std. hopper, hyd. lift, 540 PTO, on transport, 205/75R15 tires, S/N96384

Caldwell bin fan, 28', 10 hp., 230v, 1 phase

ROCKPICKERS

Crown WR120 hyd. rock windrower, 12', 7.60-15 tires, S/N1224

Haybuster H106 Rock-Eze hyd. rockpicker, 10', high lift dump box, S/N79336

Melroe fork-style rockpicker, hyd. dump, offset hitch

OTHER EQUIPMENT

Letourneau LS pull-type scraper, 11 yd., hyd. push-off, conversion by Steve Voightman, 14,000-20 front tires, 16,000-20 rear tires

Letourneau LS direct mount scraper, 11 yd., hyd. push-off, hyd. laser mast, universal drawbar hitch

2012 Bush Hog 12815-2 rotary mower, 15', susp., large 1000 PTO, walking tandems on main, safety chains, H29x9.0-15 tires, S/N12-10071

Alloway stalk chopper, 22', 3 pt., 1000 PTO, (4) gauge wheels, S/N25872

Kory 6872 running gear, 4-wheel, 8'x16' wood bed, 30 gal. mix cone, 11L-15 tires on 6-bolt hubs

Track wacker, 11-1/2', 3 pt., S-tines, needs work

(12) Kenwood VHF business band radios, asst. antennas & mounts

TANKS

1,025 gal. poly leg tank, hyd. pump, 3-section control, on 2-wheel trailer, 11R24.5 lug tires

(1) 1,500 gal. poly tanks

550 gal. poly tank

TIRES

(2) Trelleborg 480/70R30 tires on Case-IH 10-hole rims, off 20 Series combine, 95% tread

(4) Goodyear 420/80R46 tires on Case-IH 10-hole rims, duals off 20 Series combine, 85% tread

(2) Goodyear 380/90R50 tires on John Deere 10-hole rims, used as triples

Titan 380/90R46 tires, 40% tread

Firestone 18.4-46 tire w/tube, 40% tread

(4) Armstrong 16.9-24 bar lug tires, 10-ply, less rims

(2) Goodyear 13.6-28 tires on John Deere 8-hole rims, New take-offs for utility tractor

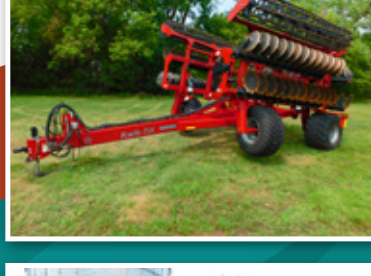
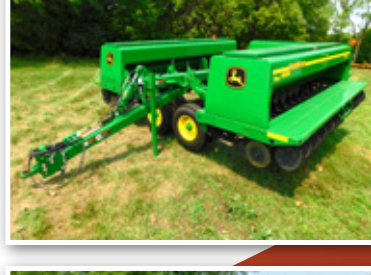
(4) Dunlop 11R24.5 lug tires on 8-hole rims

PARTS

John Deere CCS planter seeder tank, 32-row, 2 compartment, hyd. fan w/oil cooler, Digi-Star scale load cells less wiring & display, rear ladder, transport/storage stand, used as a show display by John Deere

(2) Unverferth triple spacers, 21-1/2", John Deere 10-bolt pattern, used on 7930 MFWD

(2) Clamp-on dual hubs, 3-1/2" axle, 5" bolt-on spacers



BRAD W. ERICKSON, 218.770.0598
or Tadd Skaurud at Steffes Group, 701.237.9173 or 701.729.3644

701.237.9173 | SteffesGroup.com
Steffes Group, Inc., 2000 Main Avenue East, West Fargo, ND 58078



TERMS: All items sold as is where is. Payment of cash or check must be made sale day before removal of items. Statements made auction day take precedence over all advertising. \$35 documentation fee applies to all titled vehicles. Titles will be mailed. Canadian buyers need a bank letter of credit to facilitate border transfer. Scott Steffes MN14-51, Brad Olstad MN14-70, Max Steffes MN14-031, Justin Ruth MN14-041